



ANNIVERSARY 3.0



ANNIVERSARY 3.0 Model number: 32ANN28603AH19

3 beds • 2 baths • 1680 sq.ft. • 28' width • 60' depth

Our home building facilities invest in continuous product and process improvements. Plans, dimensions, features, materials, specifications and availability are subject to change without notice or obligation. Renderings and floor plans are representative likenesses of our homes and may differ from the actual homes. We invite you to tour a Home Center near you and inspect the highest value in quality housing available or call (903) 595-2525 to speak with a Home Consultant. Copyright 2017, CMH. All rights reserved.

<https://www.claytonhomesoftyler.com>

CLAYTON HOMES-TYLER

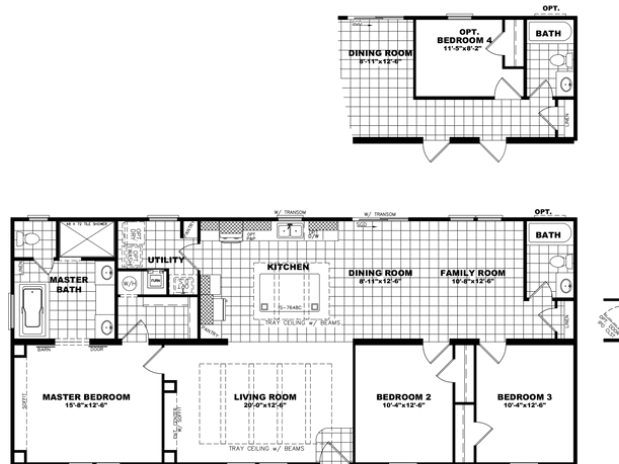
411 N NE LOOP 323
TYLER, TX 75708

Monday - Thursday: 9am - 6pm
Friday: 9am - 6pm
Saturday: 9am - 5pm
Sunday: Closed

(903) 595-2525



ANNIVERSARY 3.0



ANNIVERSARY 3.0

Model #: ANN28603A
Drawing #:
32M454

ANNIVERSARY 3.0 Model number: 32ANN28603AH19

3 beds • 2 baths • 1680 sq.ft. • 28' width • 60' depth

Our home building facilities invest in continuous product and process improvements. Plans, dimensions, features, materials, specifications and availability are subject to change without notice or obligation. Renderings and floor plans are representative likenesses of our homes and may differ from the actual homes. We invite you to tour a Home Center near you and inspect the highest value in quality housing available or call (903) 595-2525 to speak with a Home Consultant. Copyright 2017, CMH. All rights reserved.

<https://www.claytonhomesoftyler.com>

CLAYTON HOMES-TYLER

411 N NE LOOP 323
TYLER, TX 75708

Monday - Thursday: 9am - 6pm
Friday: 9am - 6pm
Saturday: 9am - 5pm
Sunday: Closed

(903) 595-2525